



# The D-Scope<sup>+</sup>

The diamond microscope  
**reinvented**

CERTIFICATION | EDUCATION | EQUIPMENT

Discover more at [www.hrdantwerp.com](http://www.hrdantwerp.com)    

# The D-Scope<sup>+</sup>

The diamond microscope reinvented

## What you need to know about the D-Scope<sup>+</sup>

The D-Scope<sup>+</sup> is the new version of the D-scope, the indispensable analysis tool for all types of diamonds and gemstones since 2001. Every aspect of the D-Scope has been further optimized in the D-Scope<sup>+</sup>, offering not only the best, but also the most innovative diamond analysis experience on the market. In fact, the diamond microscope has been reinvented!

## Key features of the D-Scope<sup>+</sup>

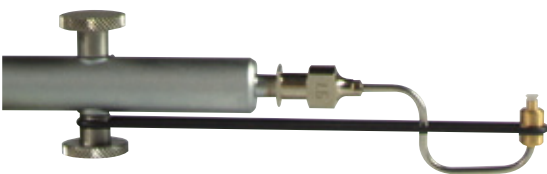
### Illumination

**A revolutionary dark-field lighting technology** allows you to choose between three different colours of light: yellowish light, white light and strong white light (daylight). These three different colours are made for a **more efficient clarity analysis** and are ideal for studying all kinds of internal and external characteristics of the diamond. The colour and intensity can be easily adjusted with the touch panel.



### Manipulation

The **state-of-art vacuum gem-manipulation** system makes it possible to hold the stone and move it in all directions without touching it. The new D-stick has been improved for a **better comfort** while manipulating the stone.



### Ergonomics

Ergonomics has been completely redesigned to ensure a **comfortable position** for the user:

- Pre-inclination and possibility to give a forward tilt to the microscope
- Height of optics and eyepieces can be adjusted according to the most comfortable table position of the operator
- Manipulation table can move up and down to achieve a proper focus on the stone and to keep an agreeable position at all times



# The D-Scope<sup>+</sup>

The diamond microscope reinvented

## Optics

A **wide variety of optical heads** can be chosen from the world most famous manufacturers of optics, such as Zeiss and Leica. Stereo zoom optics provide the ability to see **fine details in 3D** for a better, faster, and more reliable identification, analysis and measurement. The long working distance permits easy manipulation of the inspected stones.



### Zeiss Stemi 508

8:1 zoom with magnification range  
6,3x to 50x

Working distance: 92 mm

Field of view: 36,8 mm

35° angle eye tubes



### Leica S9E

9:1 zoom with magnification range  
6,1x to 55x

Working distance: 122 mm

Field of view: 37,6 mm

35° angle eye tubes



### Olympus SZ51

5:1 zoom with magnification range  
0,8x to 4x

Working distance: 110 mm

Field of view: 22 mm

45° angle eye tubes

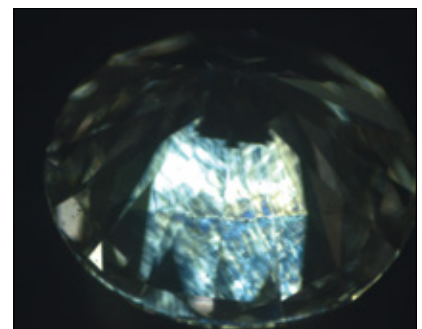
Other optics, eyepieces or additional lenses to increase or decrease magnification, field of view, depth of field or to add a camera system, are available on request.

## Accessories

### Polarisation set

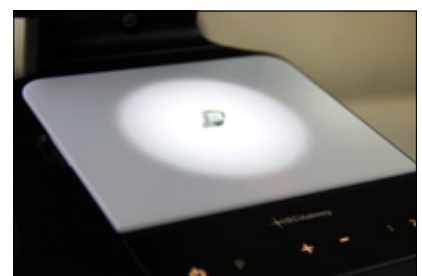
Diamonds have internal tension or stress that occurs naturally as part of their structure. The tension varies from a stone to another because of their unique formation process. With the polarisation set, it is possible to observe the tension in the stone while using the microscope.

An indispensable accessory for diamond planners/manufacturers to reduce risk of damage or destruction of the diamond by locating the tension areas and developing sawing plans.



### Transmitted light

For examining rough diamonds, a transmitted light can replace the dark-field illumination. The D-stick can be removed in order to use both hands comfortably.



# The D-Scope<sup>+</sup>

The diamond microscope reinvented

## Sorting trays

The diamond sorting trays are useful to hold and organize melee goods for grading and sorting, and can replace the dark-field illumination.

## Upperlight

For more brightness and uniform illumination, an extra upper light can be used on the optics. Available for Zeiss and Leica.

## Avalight

By putting a facet in reflection with the special light source Avalight, its smoothness can be observed instantly. The Avalight makes polish grading of a stone easy.

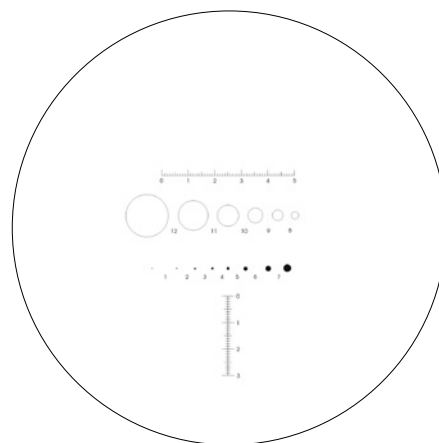


## HRD Antwerp (combi) graticule kit

A graticule kit can be used for determining the size of inclusions:

- A precise, objective measurement of internal characteristics with the aid of reference circles
- Measuring the external dimensions of rounds and all other shapes using the linear scale

The combi kit makes it also possible to measure proportions and angles of inclination.



---

HRD ANTWERP IS BASED IN ANTWERP, DIAMOND CAPITAL OF THE WORLD.

**HRD ANTWERP NV** | Hoveniersstraat 22 | BE - 2018 Antwerp | Belgium  
Tel. +32 3 222 06 23 | Fax +32 3 222 06 26 | [equipment@hrdantwerp.com](mailto:equipment@hrdantwerp.com)

